



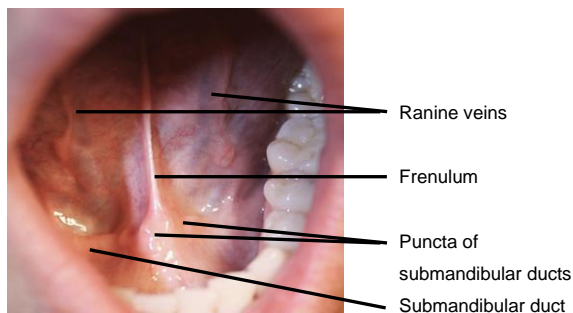
## SIALOLITHIASIS: TRADITIONAL & SIALENDOSCOPIC TECHNIQUES

Robert Witt, Oskar Edkins

Sialoliths vary in size, shape, texture, and consistency; they may be solitary or multiple. Obstructive sialadenitis with or without sialolithiasis represents the main inflammatory disorder of the major salivary glands. Approximately 80% of sialolithiasis involves the submandibular glands, 20% occurs in the parotid gland, and less than 1% is found in the sublingual gland. Patients typically present with painful swelling of the gland at mealtimes when obstruction caused by the calculus becomes most acute. When conservative management with sialogogues, massage, heat, fluids and antibiotics fails, then sialolithiasis needs to be surgically treated by transoral, sialendoscopic and sialendoscopy assisted techniques; or as a last resort, excision of the affected gland (sialadenectomy).

### Surgical anatomy

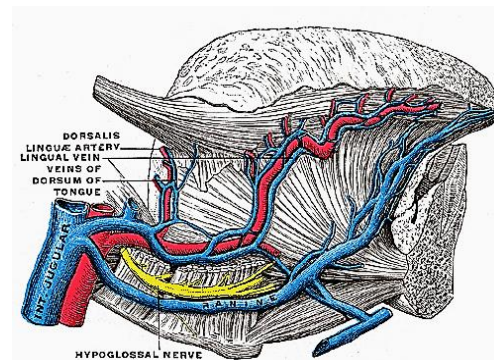
The paired **submandibular ducts** (*Wharton's ducts*) are immediately deep to the mucosa of the anterior and lateral floor of mouth (FOM) and open into the oral cavity to either side of the frenulum (*Figure 1*). The **frenulum** is a mucosal fold that extends along the midline between the openings of the submandibular ducts.



*Figure 1: Anterior FOM*

The anterior FOM has a covering of delicate oral mucosa through which the thin-walled **sublingual/ranine veins** are visible (*Figures 1 & 2*). The veins are visible on the

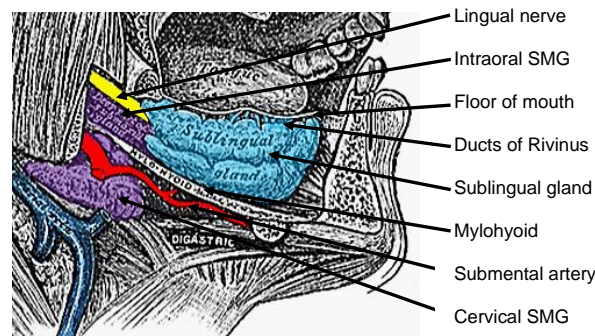
ventral surface of the tongue, and accompany the hypoglossal nerve (*Figure 2*).



*Figure 2: Ranine veins*

The paired **sublingual salivary glands** are located beneath the mucosa of the anterior FOM, anterior to the submandibular ducts and above the mylohyoid and geniohyoid muscles (*Figures 3 & 4*). The glands drain via 8-20 excretory ducts of Rivinus into the submandibular duct and also directly into the mouth on an elevated crest of mucous membrane called the *plica fimbriata* which is formed by the gland and is located to either side of the frenulum of the tongue).

In the anterior floor of mouth the **lingual nerve** is located posterior to the duct; it crosses deep to the submandibular duct in the lateral floor of mouth (*Figures 3, 4, 5*).



*Figure 3: Sagittal view floor of mouth*

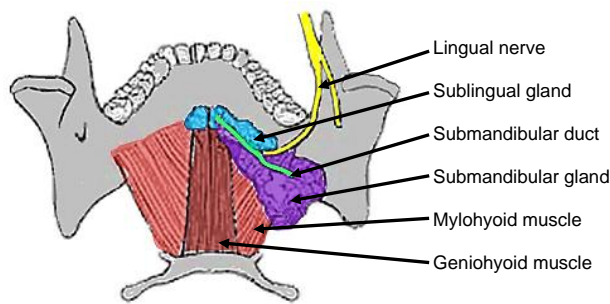


Figure 4: Superior, intraoral view of submandibular gland, duct, lingual nerve and mylohyoid and geniohyoid muscles

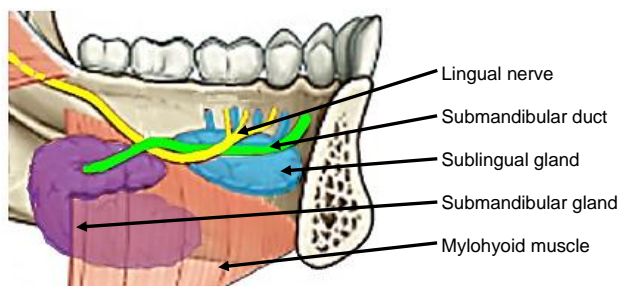


Figure 5: Intraoral view of left sublingual gland with ducts of Rivinus, submandibular gland and duct, lingual nerve and mylohyoid muscles

The *parotid (Stensen's) duct* exits the anterior edge of the parotid gland and crosses the surface and hooks around the anterior aspect of the masseter, traverses the buccal fat pad, and pierces the buccinator muscle to enter the mouth opposite the 2<sup>nd</sup> upper molar (Figure 6).

### Clinical Evaluation

Visual scanning of submandibular, preauricular, and postauricular regions is the first step to assess for the presence of swelling and erythema; this is followed by intraoral examination. The salivary ductal orifice may be red and oedematous. One should massage the gland to milk and inspect the saliva; frank infection may be represented by plaques or whitish secretions emanating from the duct. Manual palpation of the parotid gland allows a surgeon to determine the consistency of the gland.

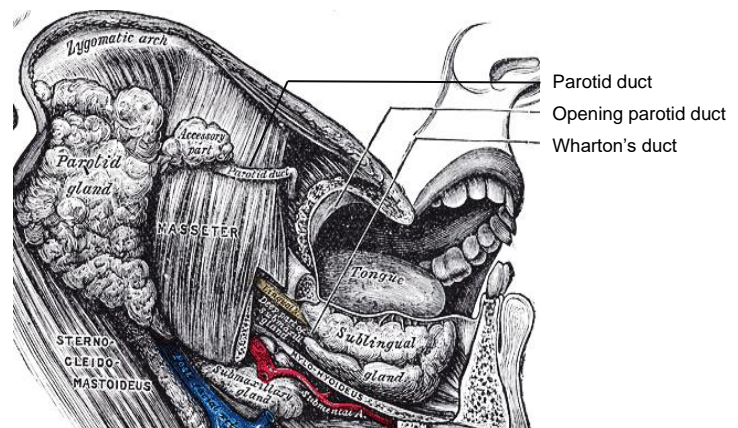


Figure 6: Stensen's duct crosses and hooks around the anterior aspect of the masseter, and pierces the buccinator muscle to enter the mouth (Gray's anatomy)

Bimanual palpation (finger inside and outside the mouth) is particularly important when examining the submandibular gland and its duct.

### Salivary imaging

Imaging modalities for inflammatory conditions of glands are plain X-rays (Figures 7a, b), sialography (Figure 8), ultrasound (Figure 9), and computed tomography (Figure 10).

**Plain X-rays** have less value with parotid stones because of the higher percentage (60-70%) of radiolucent stones; approximately 20% of submandibular stones are not visible with plain X-rays.

**Sialography** provides images of the morphology of the ductal system and allows diagnosis of strictures, dilatations, and filling defects (Figure 8).

**MR sialography** is good means to measure ductal stenosis. Although avoiding ionising radiation, it has less resolution than conventional sialography, thereby limiting visualisation of the peripheral ducts.



Figures 7a, b: Calculi within the duct (occlusal view) (a) and within submandibular gland (b)

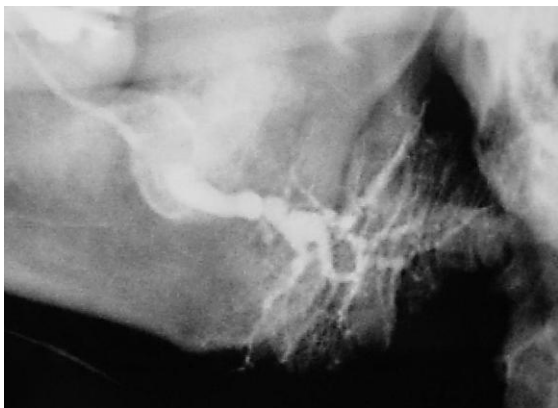


Figure 8: Sialogram demonstrating stricture of submandibular duct

**Ultrasound** (Figure 9) is noninvasive and has no associated discomfort. Failure to detect a stone with ultrasound is not uncommon as the distal portion of the submandibular and parotid ducts can be difficult to visualise using extraoral ultrasound; and ul-

trasound may be of limited value for the deep portion of the submandibular gland. An obstructed duct that may otherwise not be evident may be better visualized after giving the patient something sour like lemon juice or sour sweets as this may cause ductal dilatation with obstructive pathology (Figure 10).

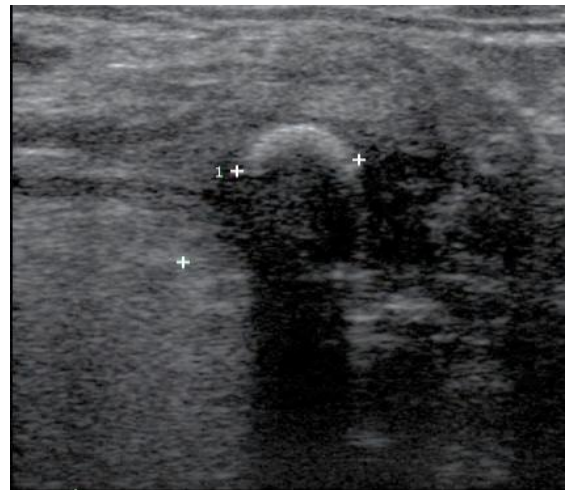


Figure 9: Ultrasound: acoustic shadow cast by calculus



Figure 10: Calculus in right mid Stensen's duct with dilatation of duct proximal to left-sided of stone

**Computed tomography (CT) imaging** is a good imaging modality to see sialoliths (Figures 11, 12). Another advantage is its ability to diagnose and locate intraparenchymal stones and calcification.

**Limitations of ultrasound and CT** include distinguishing non-echogenic stones from strictures, determining the length of a steno-

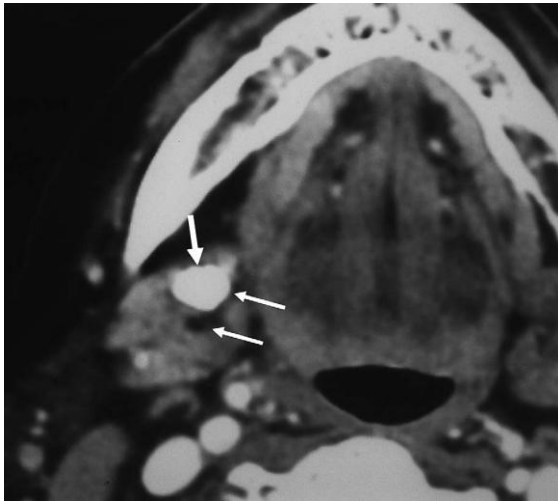


Figure 11: CT scan of calculus within hilum of submandibular gland

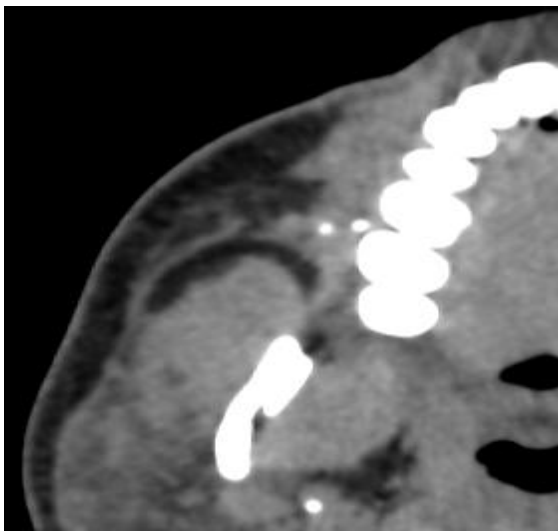


Figure 12: CT scan shows 2 small calculi within distal segment of Stensen's duct

sis and the diameter of the duct distal to an obstruction. Ultrasound is a dynamic and operator-dependent investigation and pathology may be therefore be overlooked.

### Traditional surgical approaches to submandibular gland sialolithiasis

Prior to sialendoscopy, sialoliths in the submandibular duct and gland were divided into two groups:

1. *Can be removed via intraoral sialolithotomy approaches*, including palpable

stones up to the 1<sup>st</sup> molar tooth

2. *Cannot be removed through intraoral approach and require sialadenectomy*; this includes stones posterior to the 1<sup>st</sup> molar region, or stones in the middle part of Wharton's duct that cannot be palpated intraorally

### Traditional Intraoral Submandibular Sialolithotomy (Figure 13)

- Local or general anaesthesia
- Administer local anaesthesia with a vasoconstrictor in the floor of mouth at the site of the planned incision
- Place two 3/0 silk sutures around the duct, posterior to the stone, to isolate the stone and to prevent displacing the stone to the proximal part of the duct or hilum of the gland (Figure 13)



Figure 13: Suture placed posteriorly around submandibular duct which has been incised to expose the calculus

- Cut through mucosa directly onto the stone with a cold blade, electrosurgery, or CO<sub>2</sub> laser
- Remove the calculus
- Marsupialise the opening in the duct by suturing the cut edges of the duct to the oral mucosa with interrupted 4/0 Vicryl sutures (Optional)

**Note:** Although feasible in selected cases, the same sialolithotomy procedure for the more posterior ductal region carries a signi-

ficant risk of injury to the lingual nerve and the possibility of severe bleeding from the lingual vessels (*Figure 2*).

### **Traditional surgical approaches to parotid sialolithiasis**

Prior to the advent of sialendoscopy, sialoliths in the parotid duct and gland were divided into two groups:

1. ***Can be removed via intraoral sialolithotomy***; this technique is useful only for stones located in the distal part of Stensen's duct which is anatomically demarcated by the curvature of the duct around the masseter muscle to where the duct penetrates the buccinator muscle (*Figures 6, 12*)
2. ***Cannot be removed via intraoral approach***, requiring extirpation of the parotid gland

***The 1<sup>st</sup> step therefore is to precisely locate the stone to select a surgical approach.***

### ***Traditional Intraoral Parotid Sialolithotomy***

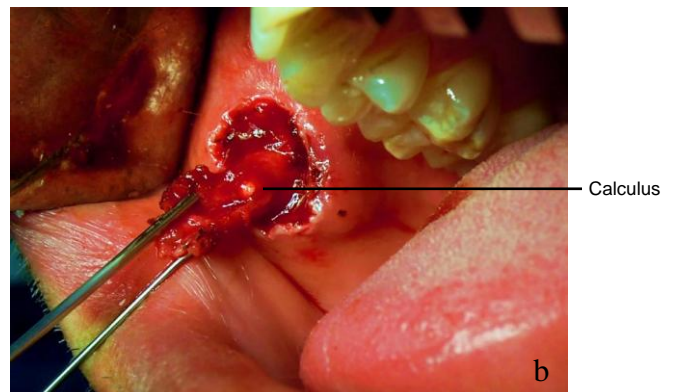
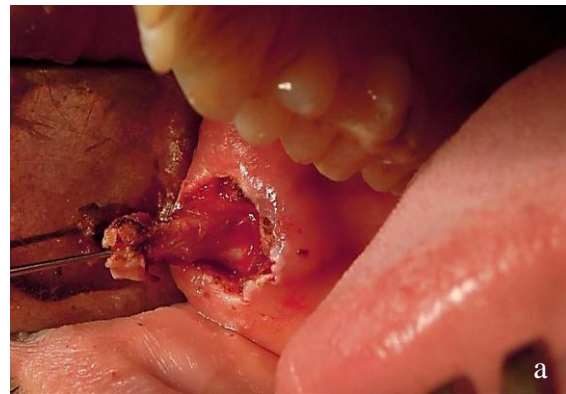
- Local or general anaesthesia
- Administer local anaesthesia with vasoconstrictor around the papilla of Stensen's duct
- Advance a lacrimal probe along the duct until one feels the stone
- Hold the papilla and probe with a haemostat to ensure a safe tract to the stone
- Make a circumferential elliptical incision around the papilla and the probe
- Dissect bluntly and sharply around the duct up to the stone's location (*Figure 14a*)
- Incise the wall of the duct over the stone (*Figure 14b*)
- Remove the stone with currettes
- Following sialolithotomy, massage the gland to release saliva and plaque
- Suture the ductal layer to the oral mu-

cosa with several 4/0 Vicryl sutures to maintain ductal patency

- Insert a stent (silastic tube) to prevent the higher incidence of ductal stenosis encountered with Stensen's as compared to Wharton's duct

### ***Parotidectomy for Sialolithiasis***

The difference between parotidectomy for sialolithiasis and a benign tumour is the condition of the gland; inflammation, scarring and fibrosis both inside the gland and around Stensen's duct make the operation difficult and heighten the risk of facial nerve injury.



***Figures 14a & b: Exposure of parotid duct and opening of duct to remove calculus***

### **Modern sialendoscopic approaches to sialolithiasis**

Salivary gland endoscopy has been a major advance, not only in terms of providing an accurate means of diagnosing and locating

intraductal obstruction, but for permitting minimally invasive surgery that can successfully relieve blockages not amenable to intraoral approaches. Sialendoscopy also permits both diagnostic assessment and definitive treatment in the same operative session <sup>1</sup>.

### **Indications for sialendoscopy**

1. Diagnostic *e.g.* recurrent episodes of swelling of major salivary gland without an obvious cause
2. Treatment (interventional sialendoscopy) of submandibular and parotid sialadenitis, including sialolithiasis
3. Exploration of the ductal system following removal of calculi from the anterior or middle parts of the submandibular and parotid ducts
4. Strictures or kinks of the salivary ductal system
5. Paediatric inflammatory and obstructive pathology

### **Contraindications to sialendoscopy**

Acute sialadenitis is a contraindication as the risks of ductal injury and perforation are increased due to the inflammation and inability to visualize during the procedure from purulent material within the duct.

### **Sialendoscopy equipment**

Rigid and semi-rigid endoscopes have a larger diameter, greater stability, and can be autoclaved (*Figures 15, 16*).

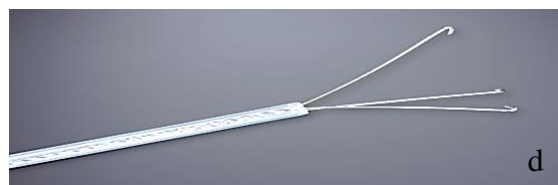


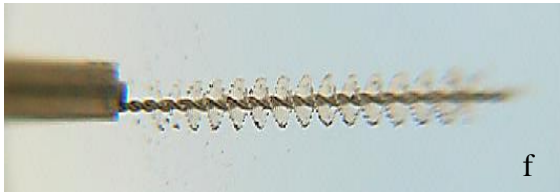
*Figure 15: Example of rigid endoscope with working and irrigation ports*



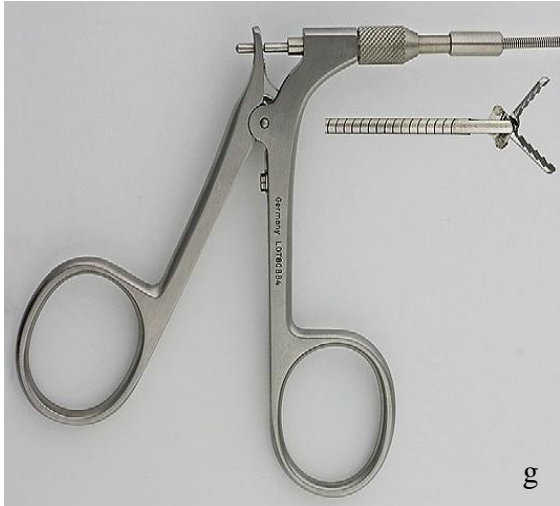
*Figure 16: Rigid endoscope, camera and irrigation system*

Instrumentation includes an array of grasping forceps, balloons, baskets, graspers, burrs, lasers fibers, and stents (*Figures 17a - h*).





f



g



h

Figures 17 a-h: Balloons, basket, grasper, hand drill, cytology brush, grasping & biopsy forceps

### Sialendoscopy technique

Introducing the endoscope into the ductal papilla, the narrowest portion of the duct, can be challenging. The following methods progressively lead to accomplishing this:

- Use magnification with surgical loupes to visualize and dilate the ductal opening
- Use conical dilators and probes (Figure 18) of increasing diameter to dilate the

duct prior to introducing the scope. Alternating the conical dilator between two serial sizes of probes can facilitate this access



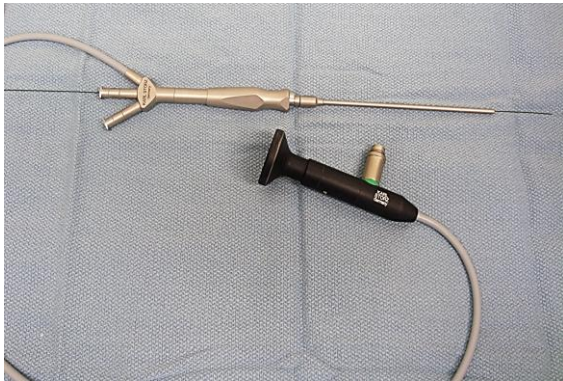
Figure 18: Conical dilator, probes of different diameters and papillotomy scissors

- With Wharton's duct:
  - Expose the oral cavity with a mouth prop to permit an unobstructed view of the floor of mouth
  - Stabilise the floor of mouth with toothed forceps placed posteriorly and superiorly relative to the punctum
  - An alternative method is for the surgeon to retract the tongue posteriorly and to the opposite side with a finger, thereby straightening out the punctum, duct and angle-of-approach
  - After dilating the duct, pass the tip of the scope into the duct (Figure 19)



Figure 19: Note light at tip of sialendoscope within the duct

- With Stenson's duct:
  - Expose the oral cavity with a mouth prop to permit an unobstructed view of the cheek and punctum
  - Stabilise the buccal mucosa by gently retracting the cheek anterolaterally at the corner of the mouth
  - Negotiating the natural bend in the duct around the masseter muscle is also facilitated by the manoeuvre
- Passing a guidewire through the working channel of the scope facilitates inserting the scope into a tight papilla (*Figure 20*)



*Figure 20: Guidewire inserted through the working channel assists with insertion of endoscope through a tight papilla*

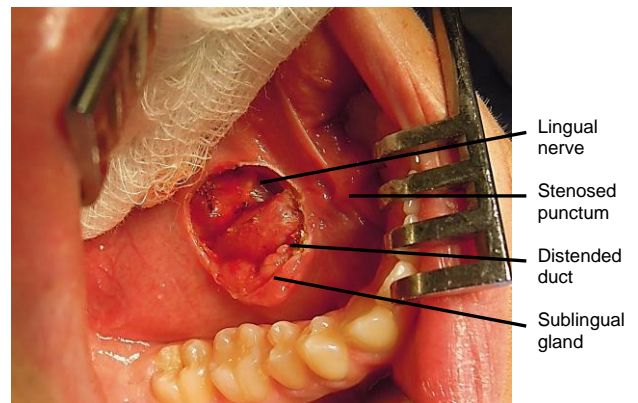
### Submandibular Stones

**Stenosis of the papilla of Wharton's duct may require a cut-down procedure** onto the duct; dissecting the sublingual gland laterally and exposing the duct and lingual nerve deep to the duct; and then inserting the sialendoscope. Healing is by secondary intention, or ductoplasty (suturing edges of the duct to the floor of mouth at the end of the procedure) can be performed. With this approach, the duct is best opened along its length superiorly, with the size of the cut limited to the size of the scope used, firstly to avoid transecting the duct and secondly to facilitate not diminishing the hydrostatic pressure required to dilate the duct during the procedure due to escape of wash around the scope.

**Saline irrigation** is used to expand the otherwise collapsing duct distally. The saline is delivered from a 50-100mL syringe via intravenous tubing which is attached to the irrigation port of the endoscope (*Figure 16*).

**Stones located distally (<1cm) from the punctum of Wharton's duct** can be removed by slitting the duct along its length with insulated needle-tip electrocautery, removal of the lith/stone, followed by sialendoscopy and lavage of the ductal system. The duct heals by secondary intention, and stents are not required to prevent stenosis.

*Figure 21* illustrates the unusual situation of a duct that is completely fibrosed at the punctum following removal of a distally located calculus; the distended duct has been exposed (note lingual nerve immediately behind the duct).



*Figure 21: Duct completely fibrosed at the punctum*

In *Figure 22* the duct has been transected and translocated to the lateral floor of mouth; absorbable sutures anchor the walls of the duct to the oral mucosa.

Alternatively, treatment for **distal stones <5 mm is by interventional sialendoscopy. Papillotomy** frequently must be performed to deliver the calculus because the ostium is the narrowest part of the duct.



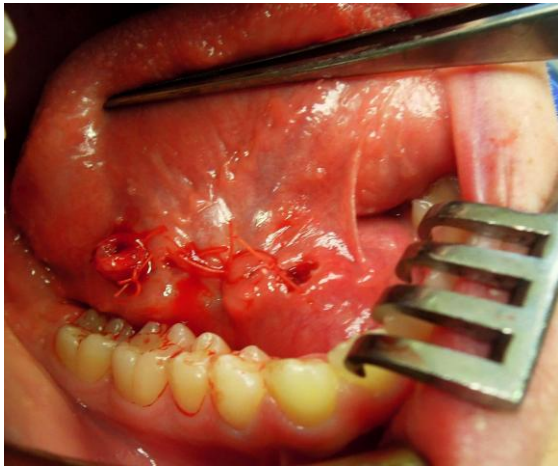


Figure 22: Duct translocated to lateral floor of mouth

**Mobile stones located proximally in Wharton's duct and measuring <5mm**, are best removed by **interventional sialendoscopy using baskets** passed through the working channel of the sialendoscope (Figures 17c, 23).



Figure 23: Calculus clutched by basket

Once a stone is engaged in the basket it often cannot be released. Therefore, the basket is passed beyond the stone and only then opened to avoid the risk of entrapping an immobile, large stone. Another technique is to hold and extract the stone with **grasping forceps**, without bypassing the stone (Figures 17g, 24).

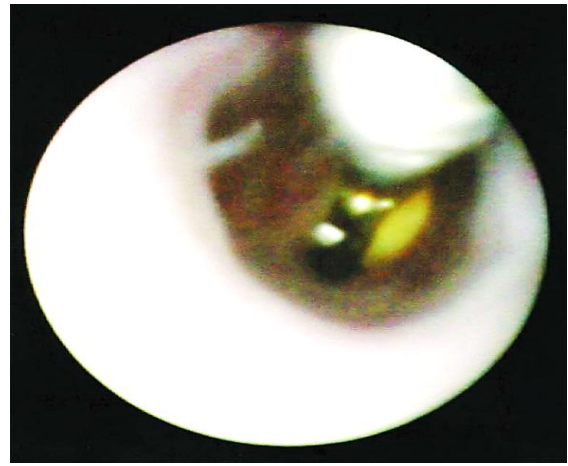


Figure 24: Calculus extracted with grasping forceps

**Larger stones may be fragmented** with a hand drill (Figure 17e) and with forceps (Figures 17g, h)); this can be time consuming. Calculi measuring >5mm and located in the proximal part of Wharton's duct can be removed by Nahlieli et al.'s ductal stretching procedure<sup>2</sup> (Figure 25) and by limited duct incision.

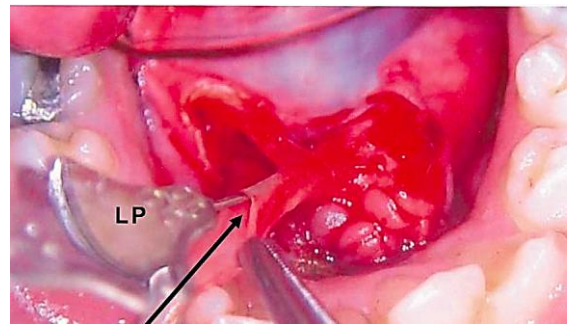


Figure 25: Larger calculi in proximal Wharton's duct removed by ductal stretching procedure with limited duct incision

**A safe surgical approach** requires a detailed knowledge of the ductal and lingual nerve **anatomy**, good **exposure** with a mouth prop, and lateral retraction of the sublingual gland with stay sutures passed between the teeth<sup>3</sup>.

**Repairing the duct proximally** can be technically challenging; **leaving it open** usually has a good outcome. **Incising the duct from**

*punctum to hilum* and then suturing the duct to the floor of the mouth usually avoids ductal stenosis<sup>4</sup>. Alternatively, Marchall<sup>5</sup> **stents the duct**. A guidewire is passed through the working channel of the sialendoscope and through a ductotomy; the sialendoscope is withdrawn; a stent is advanced over the guidewire; the stent is sutured to the papilla with a nonabsorbable suture and is left *in situ* for about 3 weeks.

**Proximal submandibular stones >5mm in diameter and not able to be removed by transoral techniques** can be treated with **Extracorporeal Shock Wave Lithotripsy (ESWL)** followed by sialendoscopy. Because of the high calcium content of submandibular calculi, this technique is less successful compared to parotid calculi that have lower calcium content. ESWL is not available or approved for calculi in many countries including the USA.

### **Parotid Stones**

Dissecting along the parotid duct from its oral end may cause stenosis. Interventional sialendoscopy and basket retrieval is the treatment of choice of both proximal and distal parotid stones measuring <4-5mm. Small calculi not amenable to interventional sialendoscopy, and stones measuring >5mm can be treated with ESWL (if available) followed by sialendoscopy. If ESWL is not available, sialendoscopy with any of the various intracorporeal fragmentation techniques described above may be performed. Alternatively, a **gland-sparing approach** using an external parotid approach combined with sialendoscopy is advocated for calculi of >5mm within Stensen's duct. Stones are located endoscopically or by intraoperative ultrasound if there is a stenosis distal to the stone. Coloured silastic tubing passed up the duct helps to stabilise the duct. An external parotid approach is then used to locate the stone. Nerve monitoring is used, because the duct crosses several

branches of the facial nerve. Stensen's duct is then slit lengthwise and the stone is removed. The duct is repaired using 7-0 Prolene. Stenoses can be repaired with a vein graft ductoplasty patch. Check that the closure is watertight by means of transoral back-pressure saline irrigation of Stensen's duct administered via the irrigation channel of the sialendoscope. Fibrin glue may help to secure a salivary seal. Sialostenting introduced either externally or via a sialendoscope and advanced over a guide wire is recommended for 2-4 weeks.

### **Impalpable intraparenchymal or impacted stones measuring >5mm**

With both submandibular and parotid stones, ESWL followed by sialendoscopy can be performed. A better outcome can be expected for parotid stones (lower calcium content). Multiple intraparenchymal symptomatic stones not amenable to conservative therapy are treated with sialoadenectomy. Where ESWL is not available, sialoadenectomy is advocated for fixed intraparenchymal stones and stones not amenable to the gland-sparing techniques. An expertly performed sialoadenectomy carries a low risk of complication to cranial nerves (V, VII, and XII) and it is a once-off event for the patient without a concern for xerostomia. A balanced informed consent should include sialoadenectomy as an alternative initial approach.

A variety of **lasers** have been used for intracorporeal lithotripsy, among them the XeCl-excimer, flash-lamp pulsed dye, the Ho:YAG, and the erbium:YAG laser. An important advantage of most lasers is that the fibers are of small diameter, sometimes only 200µm, yet allow one to deliver high-watt intensities to fragment stones even in the peripheral the ductal system or behind stenotic segments. Visibility is often compromised by floating fragments which are removed by irrigation, baskets, or forceps

before proceeding. Lasers used for intracorporeal lithotripsy are expensive, time consuming, carry a risk of perforating the duct, may require multiple procedures, and can result in the development of abscesses requiring gland removal.

### **Complications of sialendoscopy**

The severity of complications is generally quite modest and includes ductal perforation, basket entrapment, ductal avulsion, postoperative infection and ductal strictures, swelling in the floor of mouth with potential airway compromise and recurrence of symptoms<sup>6</sup>. Risks associated with transoral submandibular approaches include lingual nerve injury and bleeding. Transfacial sialendoscopic approaches can result in trauma to the buccal branches of the facial nerve and formation of a sialocoele; this is managed with Botox (Allergan, Inc. Irvine, CA) and anticholinergics, but is best avoided by creating a watertight seal and using tissue glue.

### **Practical tips for the new sialendoscopist**

- Attend a hands-on course or get a senior colleague trained in the procedure to assist you
- There is a significant learning curve so choose your initial cases carefully, be patient and allow enough operating time
- Accessing the ducts can be challenging (especially Wharton's duct) so use the appropriate techniques to stabilize the ducts when dilating them
- If you perforate a duct, abort the procedure or call a senior colleague to assist, as the duct may require stenting

### **Tips about setup and equipment**

- Take great care when handling the scopes as they are easily damaged. Nursing and medical staff need to be adequately trained to avoid breakages.

- A 1.3mm sialendoscope is the most versatile as it has a suitable working channel for most basic instrumentation
- When setting up the camera head to scope the duct, it is important that the orientation of the scope be the same as that on the monitor as disorientation will make it impossible to locate the lumen of the duct
- Guidewires are very useful to access narrowed ducts as well to dilate ductal stenoses

### **Concluding remarks**

Success is measured by treatment that is efficient, clinically effective, cost effective, and gland sparing. Diagnostic and interventional sialendoscopy, and sialendoscopy-assisted and transoral techniques have been a major advance, not only by providing an accurate means of diagnosing and locating obstruction, but also permitting minimally invasive surgical management that can successfully address sialolithiasis, and preclude sialoadenectomy in most cases. Multiple or combined measures may prove effective. A flexible methodology is still required<sup>7</sup>.

### **References**

1. Geisthoff UW. Techniques for multimodal salivary gland stone therapy. *Oper Tech Otolaryngol* 2007;18:332–40
2. Nahlieli O, Shacham R, Zagury A, *et al.* The ductal stretching technique: an endoscopic-assisted technique for removal of submandibular stones. *Laryngoscope* 2007;117:1031–5
3. McGurk M. Treatment for non-neoplastic disease of the submandibular gland. In: McGurk M, Renehan A eds. *Controversies in the Management of Salivary Gland Disease*. Oxford, UK: Oxford Univ Press; 2001:297–309
4. Zenk J, Constantinidis J, Al-Kadah B, Iro H. Transoral removal of submandi-

bular stones. *Arch Otolaryngol Head Neck Surg* 2001;127: 432–6

5. Marchall F. Removal of calculi or strictures in salivary ducts that cannot be removed by sialendoscopy. In: Myers EN, Ferris RL, eds. *Salivary Gland Disorders*. Heidelberg, Germany: Springer; 2007:149–58
6. Walvekar RR, Razfar A, Carrau RL, Schaitkin B. Sialendoscopy and associated complications: a preliminary experience. *Laryngoscope* 2008;118: 776–9
7. Witt R, Iro H, Koch M, McGurk M, Nahlieil O, Zenk J. Contemporary Review: Minimally Invasive Options for Salivary Calculi. *Laryngoscope* 2012;122:1306-11

### How to cite this chapter

Witt RL, Edkins O. (2014). Sialolithiasis: Traditional & Sialendoscopic Techniques. In *The Open Access Atlas of Otolaryngology, Head & Neck Operative Surgery*. Retrieved from <https://vula.uct.ac.za/access/content/group/ba5fb1bd-be95-48e5-81be-586fbaeba29d/Sialolithiasis%20and%20sialendoscopy.pdf>

### Authors

Robert L Witt MD, FACS  
Professor of Otolaryngology-Head & Neck Surgery  
Thomas, Jefferson University  
Philadelphia, PA, USA  
[RobertLWitt@gmail.com](mailto:RobertLWitt@gmail.com)

Oskar Edkins MBChB, MMed, FCORL  
Otorhinolaryngologist  
Division of Otolaryngology  
University of Cape Town  
Cape Town, South Africa  
[o.edkins@uct.ac.za](mailto:o.edkins@uct.ac.za)

### Editor

Johan Fagan MBChB, FCS (ORL), MMed  
Emeritus Professor and Past Chair  
Division of Otolaryngology  
University of Cape Town  
Cape Town, South Africa  
[johannes.fagan@uct.ac.za](mailto:johannes.fagan@uct.ac.za)

## THE OPEN ACCESS ATLAS OF OTOLARYNGOLOGY, HEAD & NECK OPERATIVE SURGERY

[www.entdev.uct.ac.za](http://www.entdev.uct.ac.za)



The Open Access Atlas of Otolaryngology, Head & Neck Operative Surgery by [Johan Fagan \(Editor\) johannes.fagan@uct.ac.za](mailto:johannes.fagan@uct.ac.za) is licensed under a [Creative Commons Attribution - Non-Commercial 3.0 Unported License](https://creativecommons.org/licenses/by-nc/3.0/)

